

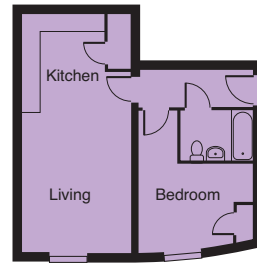
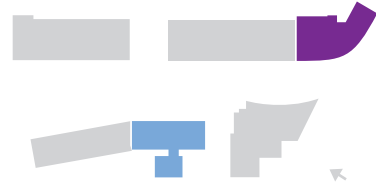
Floor plans
Part Buy, Part Rent



**Alperton
Village**

Holinger Court

Apartment Types



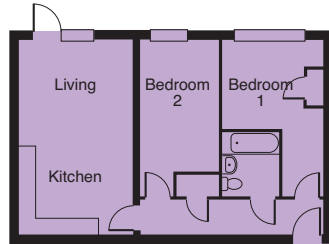
Living	3.64m x 4.72m 11' 11" x 15' 5"
Kitchen	3.64m x 3.30m 11' 11" x 10' 9"
Bedroom	3.86m x 4.73m 12' 7" x 15' 6"
Bathroom	2.46m x 1.70m 8' 0" x 5' 6"



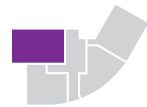
Floor	G
Apartment no.	1

Comstock Court

Apartment Types



Living	3.84m x 3.47m 12' 7" x 11' 4"
Kitchen	3.84m x 2.99m 12' 7" x 9' 9"
Bedroom 1	3.89m x 4.73m 12' 7" x 15' 6"
Bedroom 2	3.43m x 5.26m 11' 2" x 17' 3"
Bathroom	2.20m x 1.95m 7' 2" x 6' 4"



Floor	G 1 2
Apartment no.	2 6 10

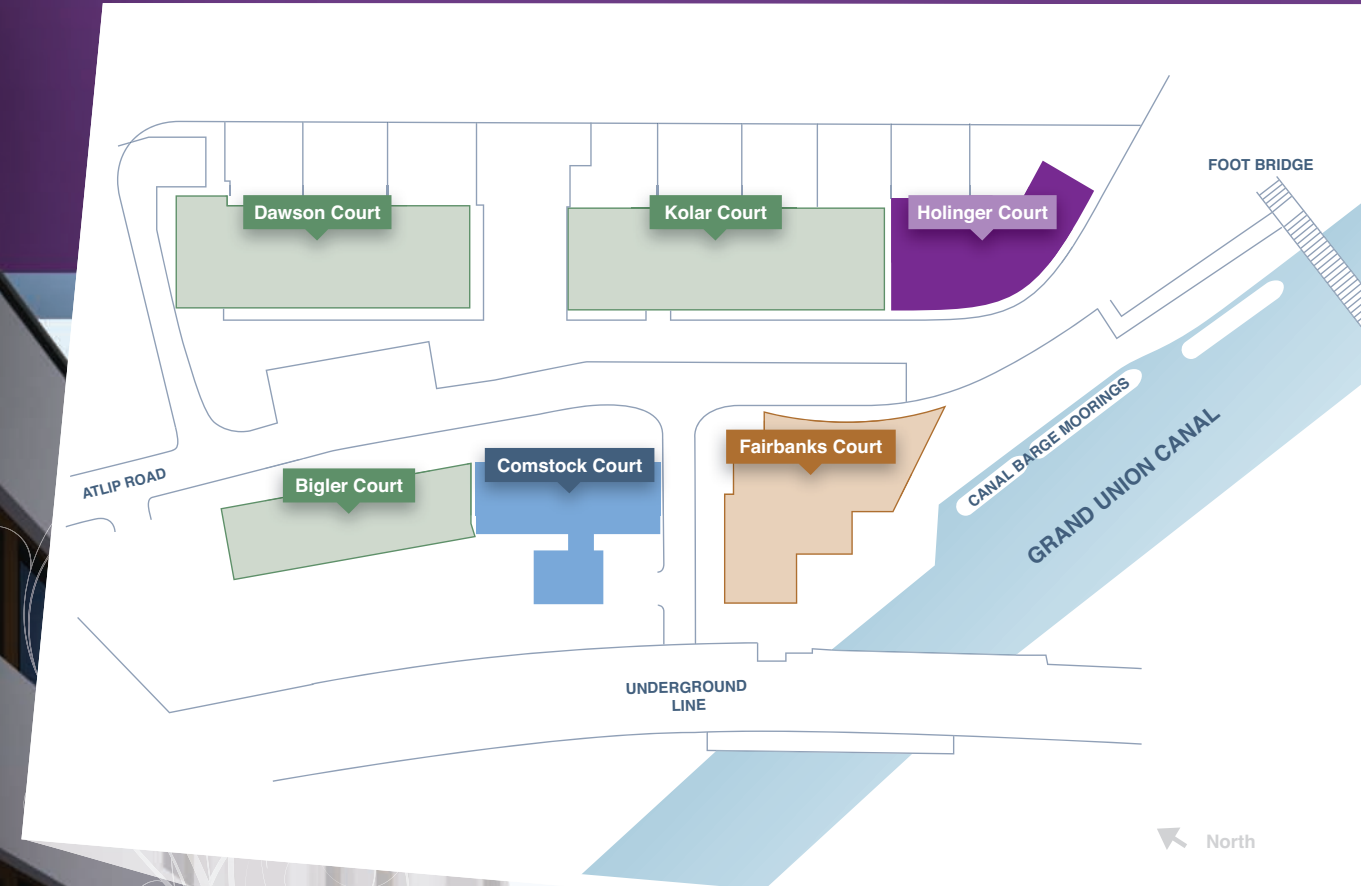


Living	4.19m x 4.92m 13' 9" x 16' 1"
Kitchen	1.60m x 5.94m 5' 2" x 19' 5"
Bedroom	4.39m x 4.18m 14' 4" x 13' 8"
Bathroom	2.20m x 1.95m 7' 2" x 6' 4"



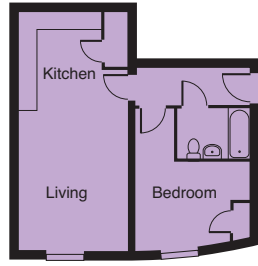
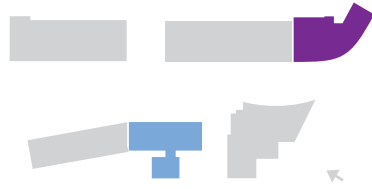
Floor	G 1 2 3
Apartment no.	4 3 7 11 15 19

Site Plan



- L&Q Part Buy, Part Rent
- L&Q Part Buy, Part Rent & Subsidised Rent
- Private Sale
- L&Q Affordable Housing

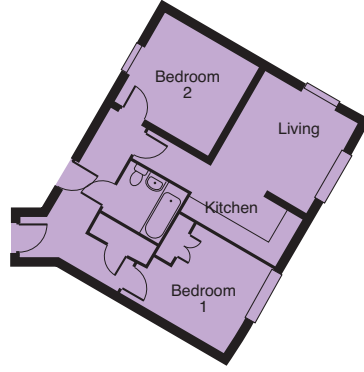
Holinger Court Apartment Types



Living	3.64m x 4.72m 11' 11" x 15' 5"
Kitchen	3.64m x 3.30m 11' 11" x 10' 9"
Bedroom	3.86m x 4.73m 12' 7" x 15' 6"
Bathroom	2.46m x 1.70m 8' 0" x 5' 6"

Floor
G

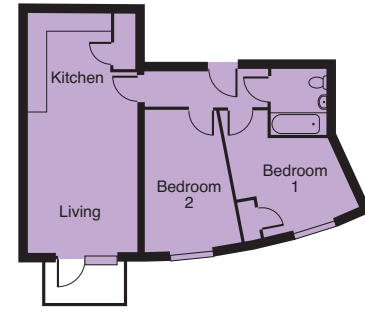
Apartment no.
1



Living	3.39m x 3.66m 11' 1" x 11' 11"
Kitchen	1.84m x 3.67m 6' 0" x 12' 0"
Bedroom 1	4.39m x 4.18m 14' 4" x 13' 8"
Bedroom 2	3.41m x 3.66m 11' 2" x 12' 0"
Bathroom	2.20m x 1.95m 7' 2" x 6' 4"

Floor
G 1 2 3

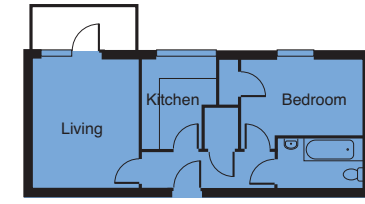
Apartment no.
4 8 12 16 20



Living	3.64m x 4.72m 11' 11" x 15' 5"
Kitchen	3.64m x 3.30m 11' 11" x 10' 9"
Bedroom 1	3.42m x 4.24m 11' 2" x 13' 10"
Bedroom 2	3.25m x 4.70m 10' 7" x 15' 5"
Bathroom	2.46m x 1.70m 8' 0" x 5' 6"

Floor
1 2 3 4

Apartment no.
5 9 13 17 21



Living	3.55m x 4.24m 11' 7" x 13' 11"
Kitchen	2.49m x 2.94m 8' 1" x 9' 7"
Bedroom	4.08m x 2.94m 13' 4" x 9' 7"
Bathroom	1.65m x 2.86m 5' 4" x 9' 4"

Floor
1

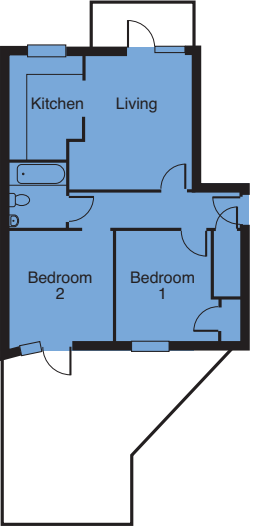
Apartment no.
4



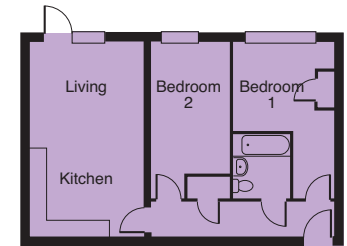
Floor
1

Apartment no.
3

Living	4.20m x 4.54m 13' 9" x 14' 10"
Kitchen	3.45m x 2.45m 11' 3" x 8' 10"
Bedroom 1	3.43m x 3.64m 11' 2" x 11' 11"
Bedroom 2	3.47m x 3.76m 11' 4" x 12' 3"
Bathroom	2.20m x 1.92m 7' 2" x 6' 3"



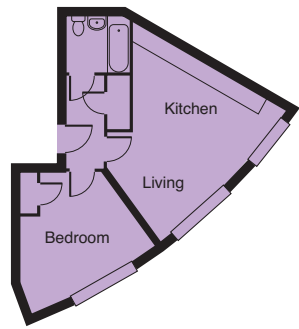
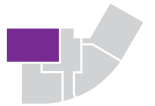
Comstock Court Apartment Types



Living	3.84m x 3.47m 12' 7" x 11' 4"
Kitchen	3.84m x 2.99m 12' 7" x 9' 9"
Bedroom 1	3.89m x 4.73m 12' 7" x 15' 6"
Bedroom 2	3.43m x 5.26m 11' 2" x 17' 3"
Bathroom	2.20m x 1.95m 7' 2" x 6' 4"

Floor
G 1 2

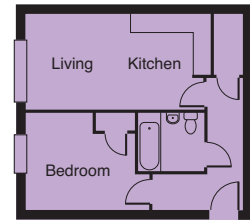
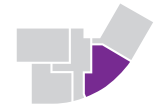
Apartment no.
2 6 10



Living	4.19m x 4.92m 13' 9" x 16' 1"
Kitchen	1.60m x 5.94m 5' 2" x 19' 5"
Bedroom	4.39m x 4.18m 14' 4" x 13' 8"
Bathroom	2.20m x 1.95m 7' 2" x 6' 4"

Floor
G 1 2 3

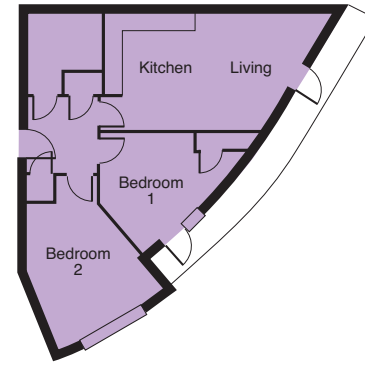
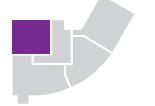
Apartment no.
4 3 7 11 15 19



Living	3.23m x 3.49m 10' 7" x 11' 5"
Kitchen	2.04m x 2.70m 6' 8" x 8' 10"
Bedroom	3.23m x 4.13m 10' 6" x 13' 6"
Bathroom	2.20m x 1.95m 7' 2" x 6' 4"

Floor
3 4

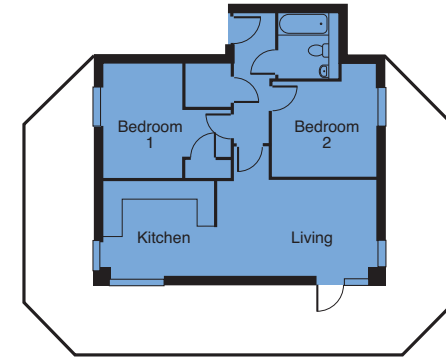
Apartment no.
14 18



Living	3.94m x 4.88m 12' 11" x 16' 0"
Kitchen	2.78m x 3.00m 9' 1" x 9' 10"
Bedroom 1	3.73m x 4.61m 12' 2" x 15' 1"
Bedroom 2	3.69m x 5.71m 12' 1" x 18' 8"
Bathroom	2.20m x 1.95m 7' 2" x 6' 4"

Floor
5

Apartment no.
22



Living	5.24m x 3.12m 17' 2" x 10' 2"
Kitchen	3.68m x 3.12m 12' 0" x 10' 2"
Bedroom 1	3.77m x 4.22m 12' 4" x 13' 10"
Bedroom 2	3.77m x 3.42m 12' 4" x 11' 2"
Bathroom	2.20m x 1.70m 7' 2" x 5' 6"

Floor
1

Apartment no.
6



Floor
5

Apartment no.
5

Living	3.34m x 5.74m 10' 11" x 18' 10"
Kitchen	2.47m x 2.80m 8' 1" x 9' 2"
Bedroom 1	4.05m x 3.64m 13' 3" x 11' 11"
Bedroom 2	3.39m x 3.64m 11' 1" x 11' 11"
Bathroom	2.20m x 1.87m 7' 2" x 6' 1"

